



**Sonskyn**  
PHARMACEUTICALS PVT. LTD.

**IMPROVING**  
**MUNITY**

# *Symptoms of Severe Magnesium Deficiency*



**Restores Patient's Quality of life....**

## **M**GROW<sup>®</sup>-**LC**

Magnesium Bisglycinate 175m + L -Carnitine 250mg

Tablet

### **Nourishes**

Replenishes the body's energy stores for improved vitality and productivity

### **Promotes**

**Muscle Functions:**

Promotes neuromuscular signals and muscle contraction

**Neurological Functions:**

Reduces the excitability of nerve cells. Has calming effects

**Sugar Metabolism:**

Reduces insulin resistance and improve the glycemic control in T2D Patients

**Cardiovascular functions:**

Helps heart muscles relax by countering Ca

### **Improves**

**Positive health outcome:**

Weakness, High BP, Heart Diseases

**Antioxidant Support:**

By eliminating and inhibiting damage caused by heavy metals & environment

## ***Linked to many kind of health Sickness.....***



# MGROW-LC<sup>®</sup>

Magnesium Bisglycinate 175mg + L-Carnitine 250mg

Tablet



Muscle Cramps  
& Spasm

**Muscle Cramps & Spasm:** Act as a natural Ca blocker and helps muscle cell relax after contraction

**Chronic Fatigue Syndrome:** Plays a vital role in fatty acid oxidation for energy production.



Chronic Fatigue  
Syndrom



Osteoporosis

**Osteoporosis:** -Influence the activity of Osteoblast and Osteoclast to build healthy bones

**Migraine & Chronic Headache:** Reduces Vasoconstriction along with releasing hormones that reduces pain



Migraine & Chronic  
Headache



*For Better Management of  
**Degenerative Diseases***



General Disability  
Oxidative Stress  
Chronic Vascular Diseases  
Male Infertility

**Extend the Freedom from  
Oxidative Stress**

# MITOFIT<sup>®</sup>

CAPSULE

Lycopene 10% 10000 mcg+ Vitamin A Palmitate 5000 IU + Vitamin C 40 mg + Vitamin E Natural 10 IU +  
Vitamin B1 1.7 mg.+ Vitamin B2 1.7 mg. + Vitamin B6 2 mg + Vitamin B12 1 mcg + Folic Acid 200 mcg +  
Soya Isoflavonoids 10 mg + Methylcobalamin 500 mcg. Calcium Pantothenate 12.5 mg +  
Sodium Selenite 34 mcg + Chromium Picolinate 60 mcg + Zinc Sulphate Monohydrate 12 mg.

*Enriched With the Power of **Lycopene***

## **Lycopene**

- Exhibits 100 times antioxidant power compare to vitamins and 2 times of beta-carotenes
- Prevents oxidation of low density lipoproteins(LDL) cholesterol
- Reduces oxidative stress
- Increases sperm motility (54%),sperm counts (70%) and sperm concentration (60%)

## **B-Complex**

- Prevents oxidation of polyunsaturated fats
- Essential for vision, maintaining integrity of epithelial tissue & metabolic functions
- Improves heart and nerve functions

## **Minerals(Chromium, Zinc)**

- Helps to maintain healthy blood sugar level
- Essential for growth and production of WBC
- Plays important role in metabolism of lipoproteins and maintain normal levels of blood cholesterol



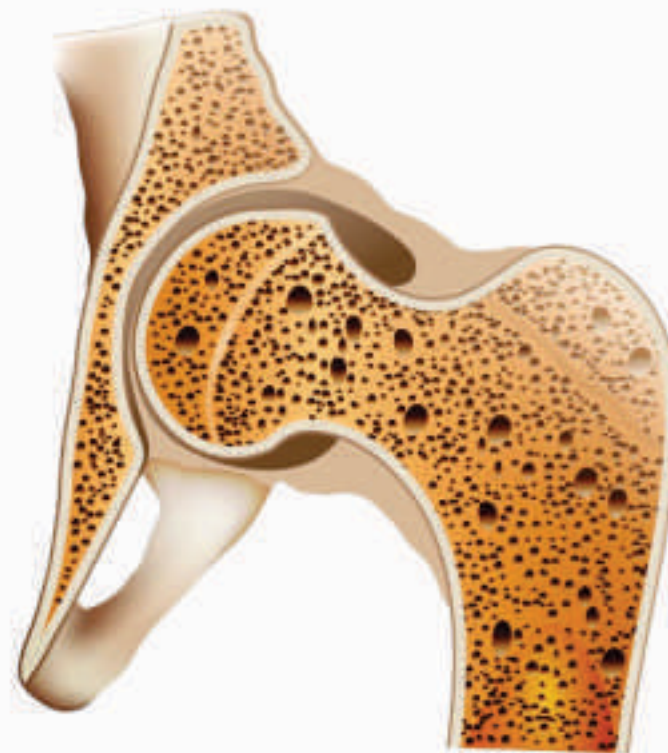
# Vitamin D3, Vitamin K<sub>2</sub>7 & Calcium

*Vital Elements  
for Bone Health*

NORMAL BONE



OSTEOPOROSIS



**For Fracture Prone  
Osteoporotic Conditions**

## SKELFIT<sup>®</sup> PLUS

Calcium Carbonate 1250mcg. + Calcitriol 0.25mcg. + Vitamin K<sub>2</sub>-7 45mcg. + Magnesium 50mg. +  
Methylcobalamin 1500mcg. + L-methylfolate 800mcg. + Zinc Sulphate 7.5mg. **Capsule**

**Complete Bone Nourishment**

- **Calcium Carbonate and Calcitriol**  
Increases B.M.D and reduces the fracture risk by 30%
- **Vitamin K<sub>2</sub>7**  
Ensures absorbed calcium is cemented to bones
- **L-Methylfolate Methylcobalamin**  
Decreases the risk of fractures by 75%  
Manage Homocysteine levels effectively
- **Zinc and Magnesium**  
Prevents and treats senile osteoporosis

Fracture

Osteomalacia

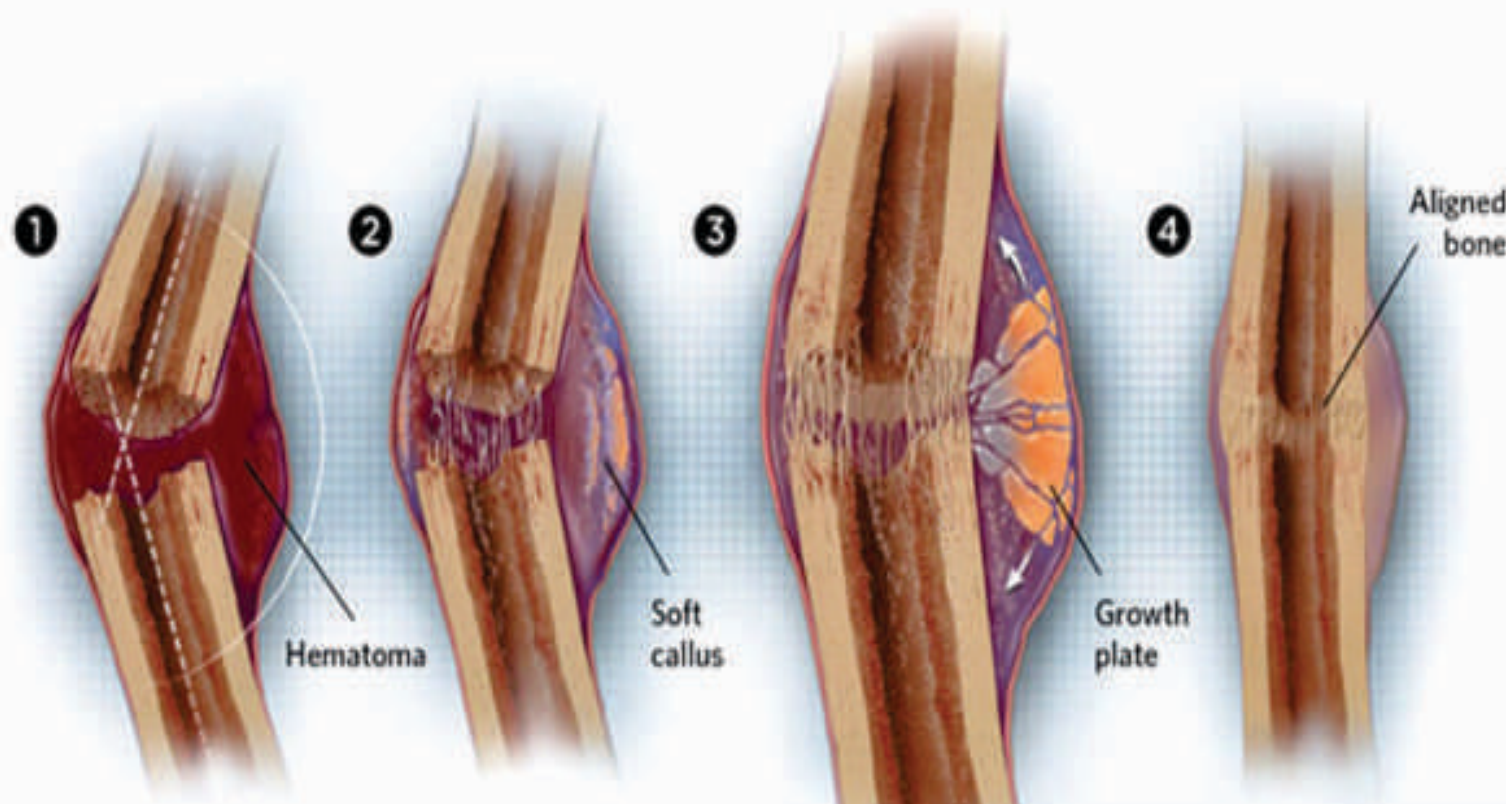
Osteoporosis

Senile Osteoporosis

*Keep the Bone 100% fit...with* **SKELFIT**



*For superior healing....  
In Fracture, Delayed  
Union & Non-Union*



**Support the Broken Bones with  
Powerful & Safe Supplementation**

**SKELFIT<sup>®</sup> MAX**

Cissus Quadrangularis 500mg + Ele .Calcium Carbonate 500mg +  
Vitamin D3 500 I.U.

Tablet

### *The Fracture Healing Accelerator*

- Reduces fracture healing period by 55% to 33% achieves 90% gain in tensile strength within 6 weeks. Promotes ALP activity and enhances collagen synthesis in the fracture healing process
- Suppresses osteoclast differentiation and increases osteoblast proliferation.
- Early proliferation of all connective tissues involved in healing and quicker mineralization of callus.
- Enhances the proliferation and differentiation ability of mesenchymal cells into osteoblasts.

Bone Fracture  
Delayed union of fractures  
Patients with low BMD

**Keep the Bone 100% fit...with SKELFIT**



*Osteoporosis patients may  
have sign and symptoms  
That include*  
**Low Back Pain**



**In Low back pain due to  
Osteoporosis and Osteopenia**

**SKELFIT<sup>®</sup> CT**  
Cacium citrate 1000 mg. Ele Zinc 7.5 mg & Calcitriol 0.25mcg **Tablet**

*Enriches Bone with Essential Minerals*

**Calcium Citrate**

- High Bioavailability
- Felicitates Calcium Retention
- Maintain Bone Mass
- Reduces the Risk of Non-Vertebral Fracture

**Calcitriol**

- Stimulates active absorption of Ca++ from G.I.T
- Helps to maintain calcium Homeostasis

**Zinc**

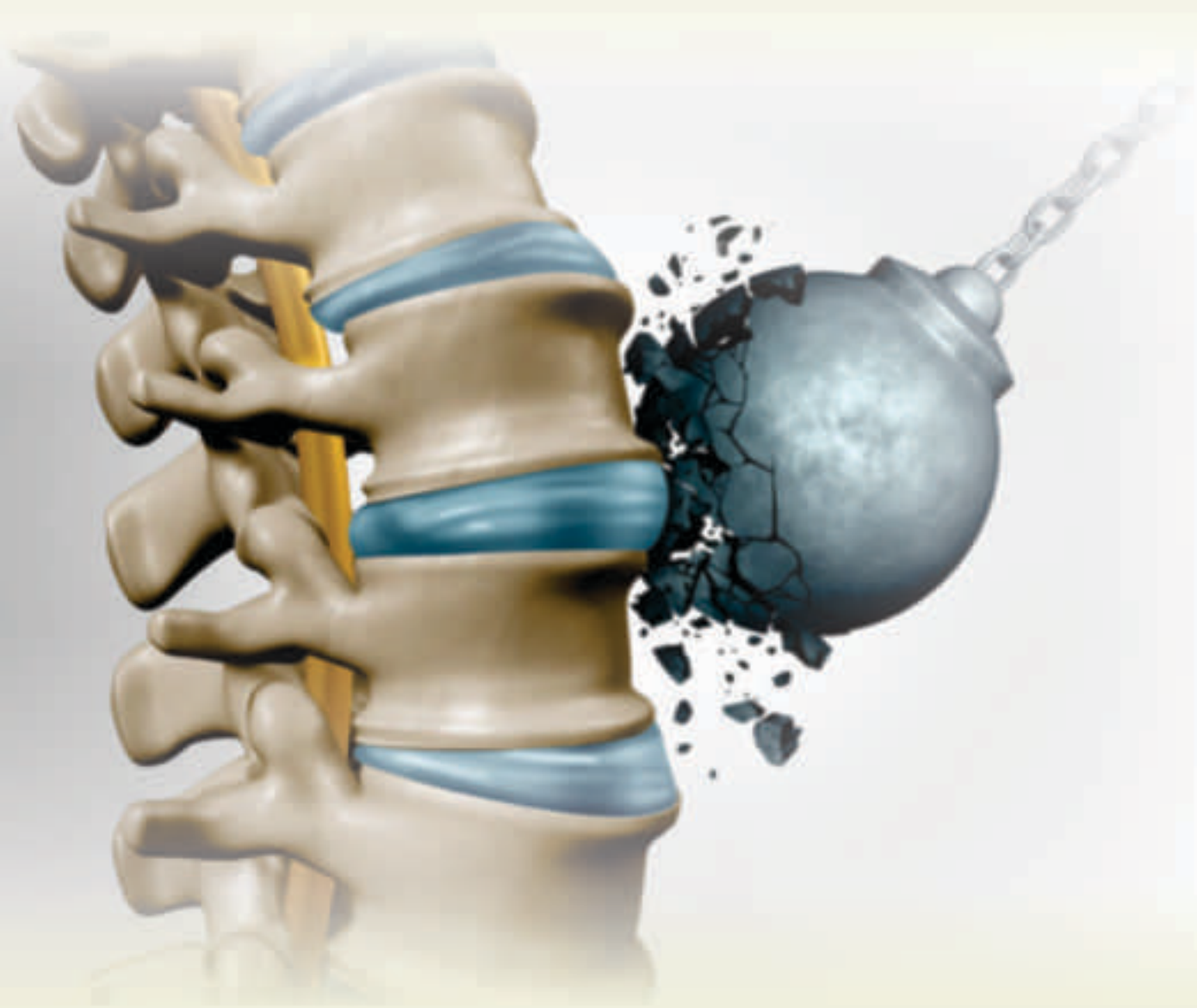
- Increases cell proliferation,alkaline phosphate activity  
And collagen synthesis in osteoblast

- Low back pain
- Osteoporosis
- Calcium deficiency syndrome
- Post Menopousal Osteoporosis

**Keep the Bone 100% fit...with SKELFIT**



*For Dense Matrix And*  
**Strong Bones.....**



**Provide calcium supplementation  
with High dose of Vitamin D3....**

**SKELFIT<sup>®</sup> HD**  
Calcium Carbonate 1250mg & Cholecalciferol 1000 IU **Tablet**

***Benefits beyond Calcium Absorption***

- Calcium and vitamin D combination is recognized as important and required nutrients for bone health and maintenance
- Intake of 1000 mg/day of elemental calcium reduces risk of fracture by 30%

***HD advantage***

Calcium derived from Hydrolyzed oyster shell

More Absorption and Utilization of elemental Ca++

**Keep the Bone *100%* fit...with **SKELFIT****



*When the need is  
**more then** usual*



**Keep the Bone 100% fit... with SKELFIT**

**Nourishing bones with Healthy Calcium**

**SKELFIT<sup>®</sup> XT**

Calcium citrate Malate 500mg. , Vitamin D3 1000 IU & Folic Acid 5mg.

Tablet

*Fulfills Growing needs*

**Calcium Citrate Malate**

- 2.5 times more bio-available then calcium carbonate
- Absorption independent of gastric Ph
- Can be prescribed with antiulcerent

**Vitamin D3**

- Enhances absorption of calcium from Gut
- Maintain normal blood level of calcium and phosphate

**Folic Acid**

- Reduces serum homocysteine levels and ensures proper bone health
- Plays a vital role in DNA & RNA synthesis

● **Vertebral Fractures**

● **Osteoporosis**

● **Pregnancy & Lactation**



Give **Strong supplement**  
*To your Patient's Weak Bones.....*



**Support The Bones With  
Powerful & Safe Supplement**

**SKELFIT<sup>®</sup> 500**

Calcium Carbonate 1250mg Eq to  
Elemental Calcium 500mg + Vit D3 250 I.U.

**Tablet**

***Strengthen the Bones Effectively***

- **Calcium Carbonate**

- Contain 40% of absorbable calcium
- Maintain the integrity of the skeletal system
- Prolongs gestation and subsequently improves birth weight

- **Vitamin D3**

- Stimulates calcium absorption
- Promotes bone mineral density

All type of Osteoporosis

Pregnancy & Lactation

Pre & Post Menopausal Syndrome

***Strong MOM & Strong BABY***



**Relax muscles, Relieves Pain....**

*In Condition Where...*

**Relaxation is Relief**

**COXKYN<sup>®</sup> MR**

Etoricoxib 60mg. & Thiocolchicoside 4mg.

Tablet

*Breaks Vicious Cycle of  
Pain-Spasm-pain Effectively*

**Etoricoxib**

- The specific COX-2 Inhibitor
- Exhibits rapid onset of action within 15 min
- Superior G.I. Tolerability compared to other NSAID

**Thiocolchicoside**

- Best centrally acting Muscle relaxant
- Better safety profile so less chances of sedation

• Arthritis  
• Trauma

• Low Back Pain  
• Spondylosis

**Stronger.....Superior.....Safer.....**



When pain & Inflammation becomes  
***hard to move***



**RESINAC-P.....**

***Offers Pain And Inflammation Free Movements***

***The ultimate winning  
combination for pain***

**RESINAC<sup>®</sup>-P**  
Aceclofenac IP 100 mg + Paracetamol IP 325 mg **TABLET**

***Keeps Life Moving...***

***Aceclofenac***

- An excellent analgesic and anti-inflammatory action,
- Offers superior GI tolerability compared to other NSAID
- Directly block PGE<sub>2</sub> secretions without any action on cox enzyme
- Stimulates cartilage matrix synthesis

***Paracetamol***

- Time tested and trusted analgesic
- Work is synergy with Aceclofenac.

- |                     |                      |
|---------------------|----------------------|
| ◆ Trauma and Injury | ◆ Fractures          |
| ◆ Post Surgery      | ◆ Soft Tissue Injury |



*When Acidity with  
**Reflux Bothers**  
your Patients*



**Cool Solution for Burning G.E.R.D**

**KYNZOLE<sup>®</sup> RD**

Rabeprazole Sodium IP 20 mg &  
Domperidone IP 30 mg Sustain Release

Capsule

*Controls Acid, Prevents Reflux,  
**Round The Clock***

### **Rabeprazole**

- Offers rapid onset of  $H^+ K^+ ATP_{ase}$  Inhibition then other PPI
- Faster onset of action due to quick dissociation
- Greater effect on Intra gastric PH after first dose
- Greater increase in mucin synthesis

### **Domperidone**

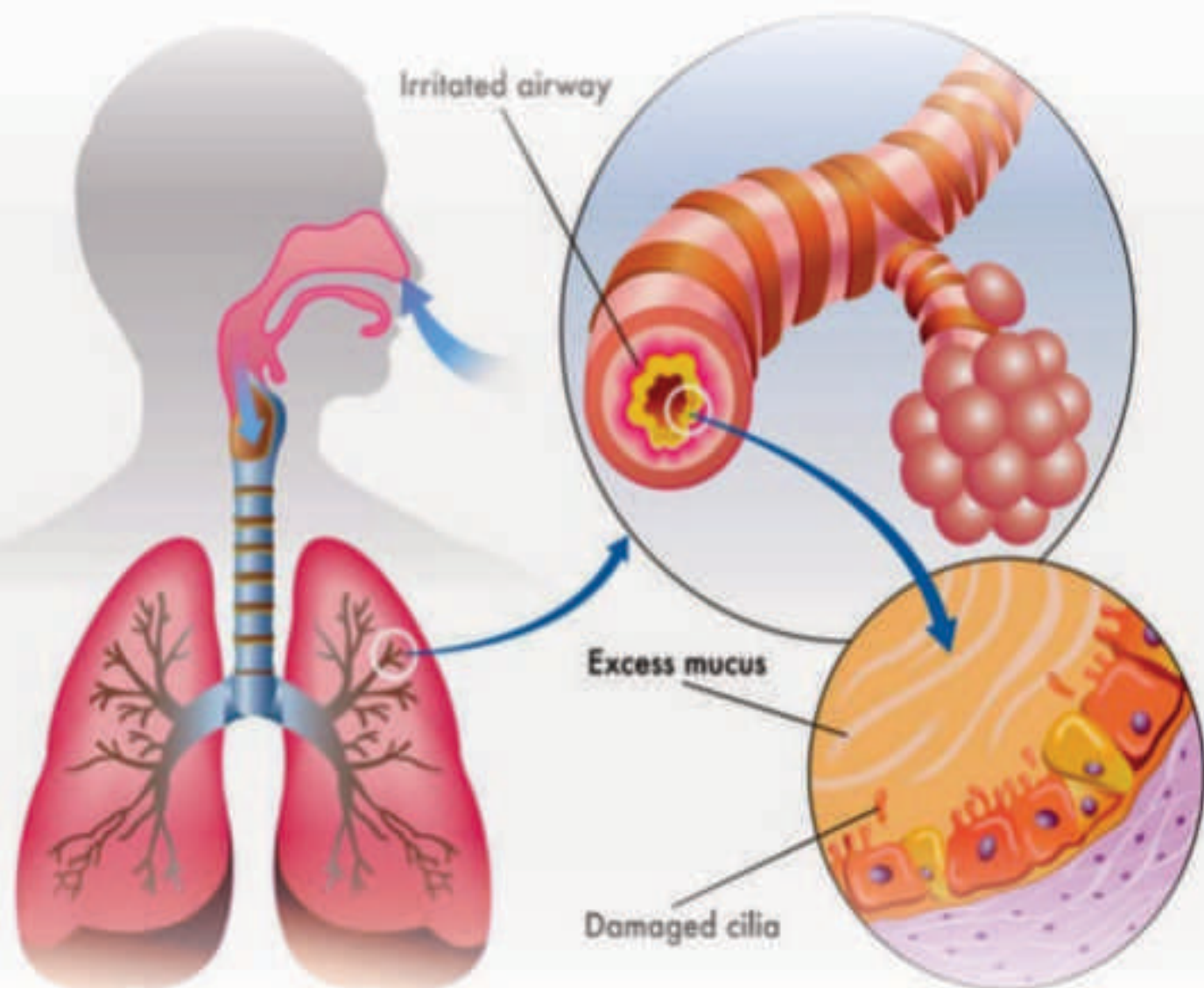
- Trusted antiemetic and gastro prokinetic agent
- Prevents backflow of HCL and promotes gastric emptying

G.E.R.D  
Heartburn  
Dyspepsia  
NSAID induced gastritis

**Relief in 15 minutes...stays for **24 hrs**...**



For **Credible Victory**  
in tough Bacterial infections



**Antibiotic that meets all  
your expectations**

**KYNCLAVE<sup>®</sup>-625**

Amoxycillin Trihydrate IP 500 mg. & Potassium Clavulanate IP 125 mg.  
with Lactic Acid Bacillus

**TABLET**

*Dual Power to fight against Infection*

- Potent broad spectrum antibacterial activity with good (PK/PD) profile
- Active against wide range of bacteria including Beta-Lactamase producers
- Excellent clinical result in varied infections
- Time tested and proven combination
- Stable in presence of Gastric acid

- Respiratory Tract Infections
- Bone and Joint Infections
- Intra-abdominal Infections
- Skin and Soft Tissue Infections

**Reliable Duo for Infection Control**



*Thank You  
Doctor*



**Sonskyn Pharmaceuticals Pvt Ltd.**

RPC City, Block-D, Sector 88,  
Faridabad-121002, Haryana, India.

Land Line No: +910129-4049574

[info@sonskynindia.com](mailto:info@sonskynindia.com)

[www.sonskynindia.com](http://www.sonskynindia.com)